



# World PT Day 2021



mæði/  
brjóstverkir

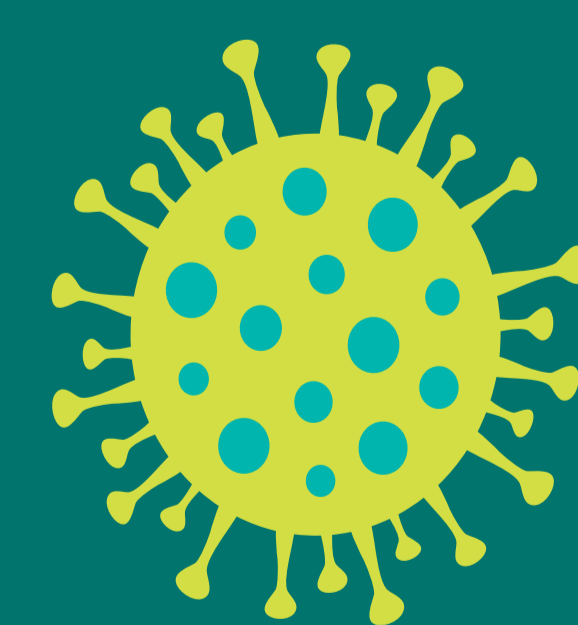
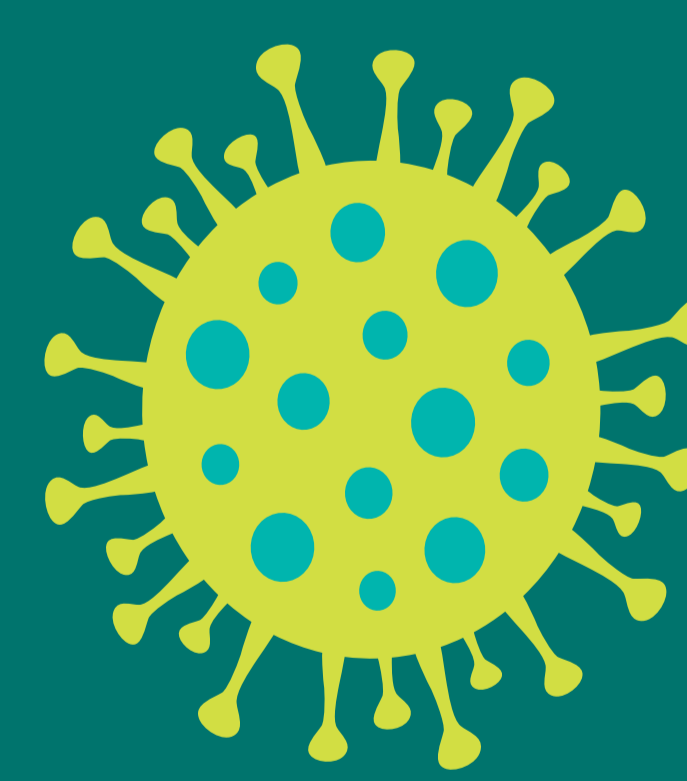
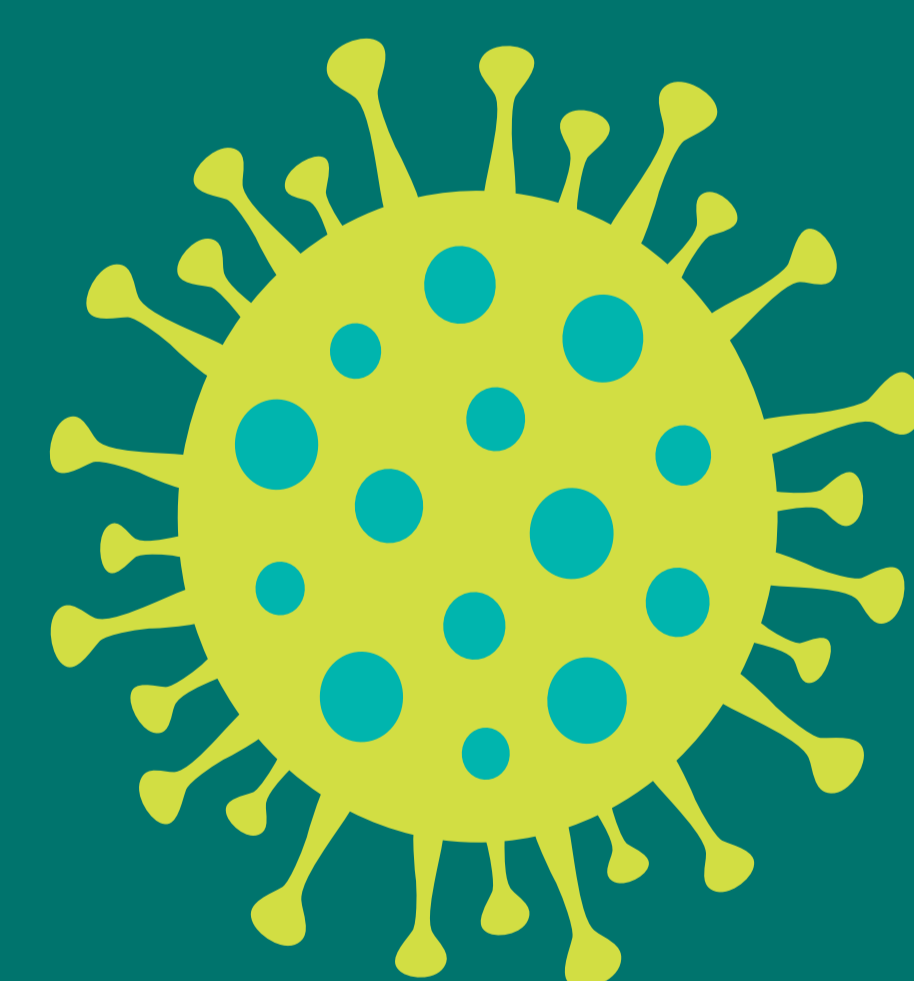


yfirgengileg þreyta/  
örmögnun eftir álag



minnisörðugleikar og  
einbeitingarskortur

Langvinn einkenni eftir  
COVID eru misjöfn á milli  
einstaklinga.  
Sjúkrþjálfarar koma að  
endurhæfingu vegna  
langvinnra COVID einkenna



World  
Physiotherapy

#WorldPTDay