



# World Physiotherapy

---

**NORTH  
AMERICA  
CARIBBEAN**

**ANNUAL  
MEMBERSHIP  
CENSUS**

**2022**



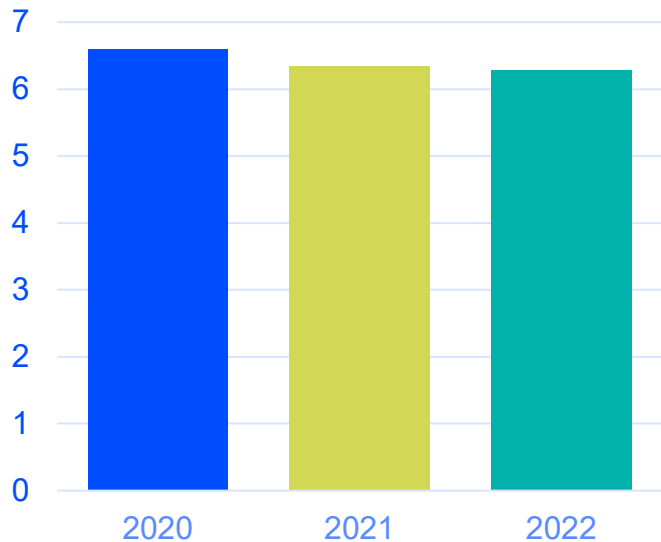
71%

of AMC respondents have **increased** their membership during 2022.

The total number of **physiotherapists** in the region has **increased** by **1,842** from 2021 to 2022.



PHYSIOTHERAPISTS PER 10,000  
POPULATION IN THE REGION



6.28

is the average number of **practising** **physiotherapists** per 10,000 population in the **North America Caribbean region** in 2022.

This is the **third highest ratio** across all five regions.

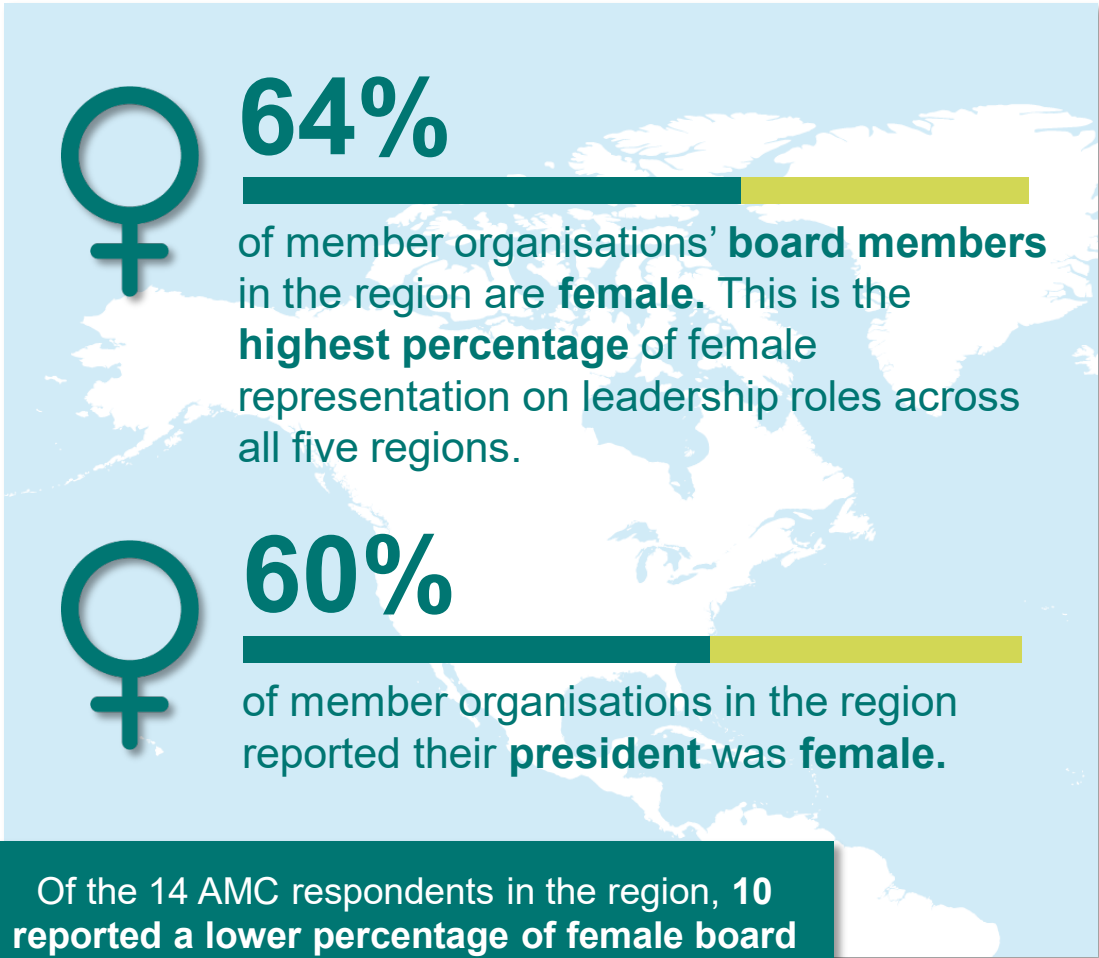


of individual members in  
**member organisations**  
in the  
**North America  
Caribbean region**  
are female



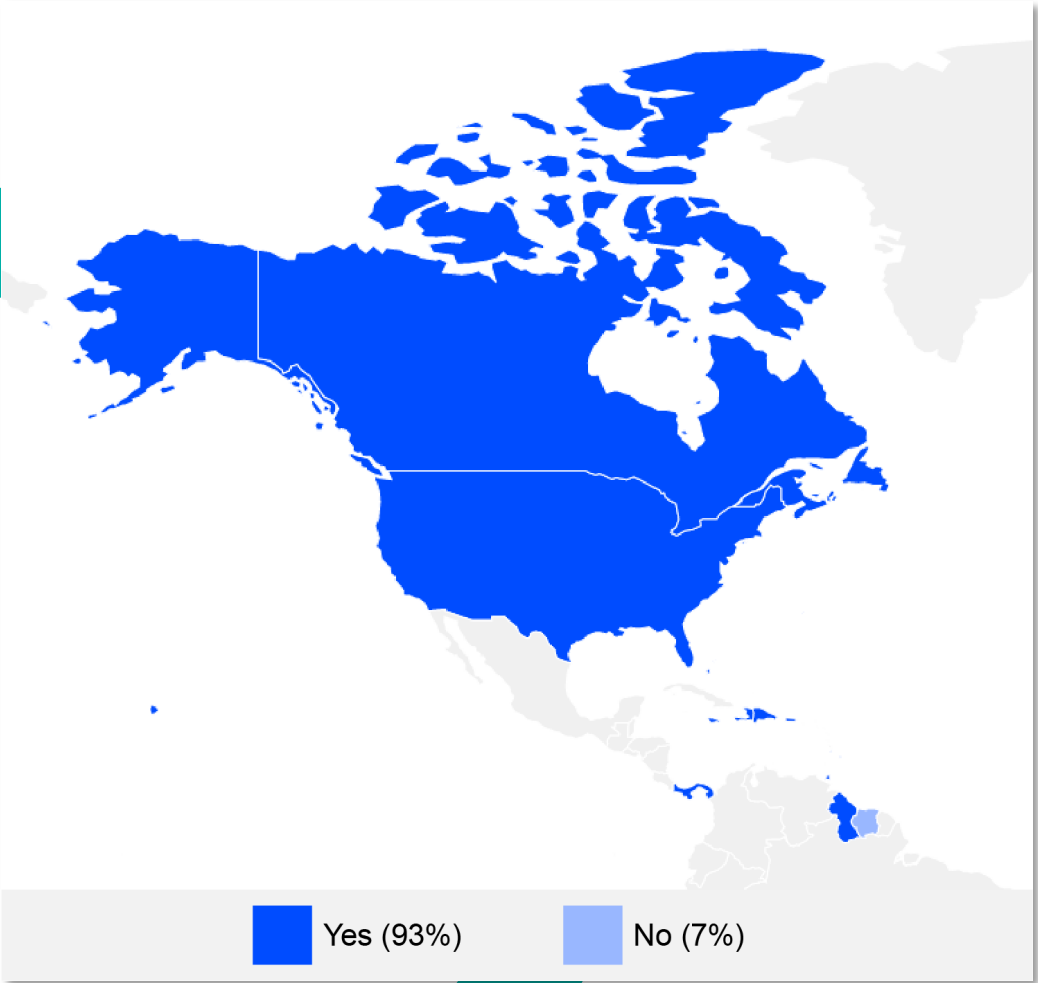
of the physiotherapy  
workforce in the  
**North America  
Caribbean region**  
are female

## BOARD MEMBERS

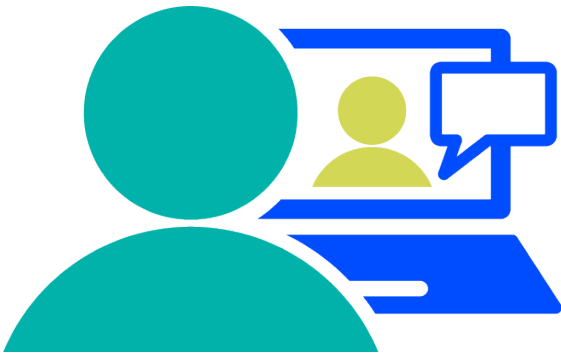
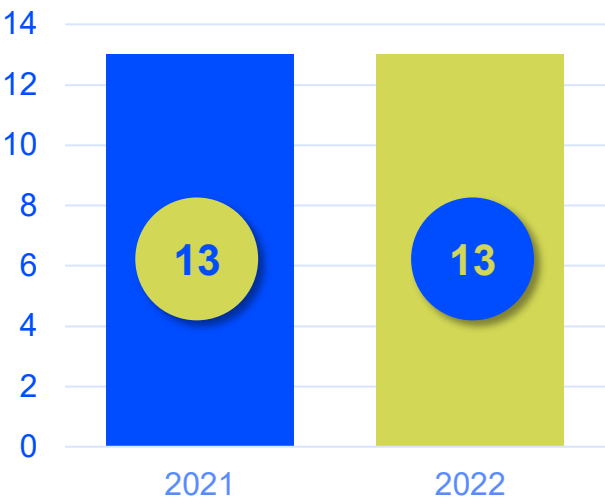


Of the 14 AMC respondents in the region, **10 reported a lower percentage of female board members** than the percentage of female physiotherapists in the workforce in their country/territory.

COUNTRIES/TERRITORIES IN THE REGION  
WHERE PHYSIOTHERAPISTS ARE ALLOWED  
TO PROVIDE TELEHEALTH SERVICES



NUMBER OF  
COUNTRIES/TERRITORIES



93%

of AMC respondents on the  
region report  
**physiotherapists are  
allowed to provide  
telehealth services**

Permission to offer telehealth  
services in the region has  
**remained consistent at  
93% since 2021**



50%

of member organisations report that **physiotherapy** is **included** in health **emergency preparedness** measures in their country/territory. This makes NACR the **lead** in **disaster management**.



IMPACT OF THE COVID-19 PANDEMIC



79%

of AMC respondents reported the capacity to provide **physiotherapy services** in their country/territory had **returned to a pre-pandemic level** or increased, regarding the number of physiotherapists working full-time and with access to necessary materials and resources. Across all regions the NACR is the most challenged in regards to returning to pre pandemic levels of service.

## THE THREE KEY CHANNELS OF COMMUNICATION USED BY AMC RESPONDENTS TO COMMUNICATE WITH THEIR MEMBERS



COUNTRIES/TERRITORIES WITH DIRECT ACCESS TO PHYSIOTHERAPY SERVICES IN THE REGION



29%

of countries/territories have **full direct access** to physiotherapy services in the region. This has **increased by 6%** since 2019.



29%

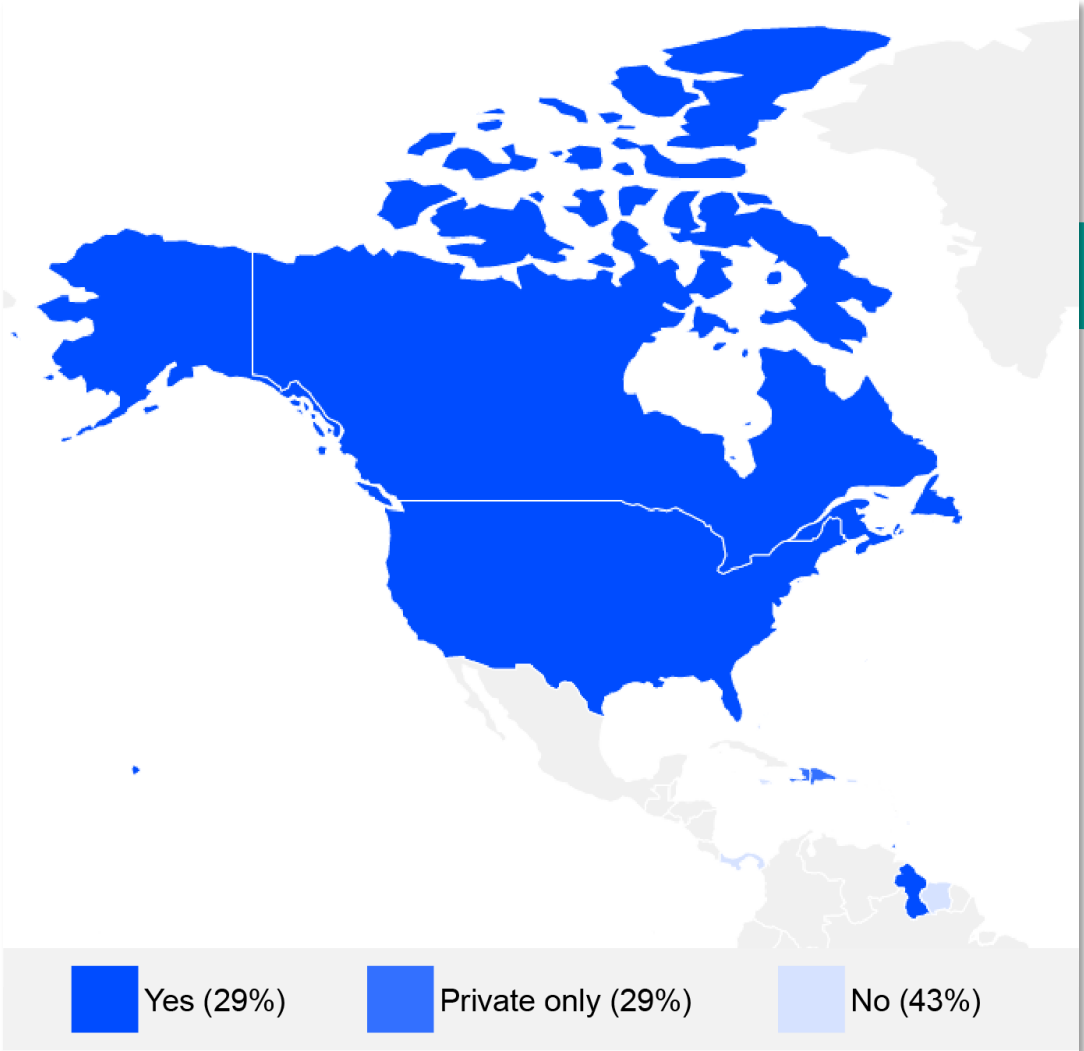
of the AMC respondents reported direct access only for **private physiotherapy services**.



43%

reported direct access is **not allowed**.

The most frequently reported **limitations to direct access** were **time** and **practice setting** (21%).



## JAMAICA – EMERGENCY PREPAREDNESS

Emergency preparedness is important in Jamaica. Hospitals have disaster preparedness committees, and many physiotherapy departments have a disaster preparedness plan. The COVID-19 pandemic was declared a national emergency. The response of the public health care system in Jamaica to the COVID-19 pandemic was varied and there was some recalibration of resource, specifically in terms of staff and service delivery. Physiotherapy services were delivered with a high level of care and dedication.

Physiotherapy services were also included in the following health emergency measures:

- emergency planning
- mapping of facilities
- stockpiling equipment

A number of health emergency strategies were applied and included:

- hours expansion
- home-based care
- telerehabilitation
- self-care
- catch-up campaigns
- alternative care





## North America Caribbean region

Bahamas
Barbados
Bermuda
Canada
Dominican Republic
Guyana
Haiti
Jamaica
Panama
Puerto Rico
St Lucia
Suriname
Trinidad and Tobago
United States

# 93%

of member organisations  
(14 out of 15 ) in the  
region submitted data  
for the annual  
membership census  
(AMC) in 2022.

## DISCLAIMER

- The data in this report is based on responses to the annual membership census (AMC) sent to World Physiotherapy's member organisations.
- The AMC was sent to 125 member organisations, of which 116 responded, representing a 92.8% response rate. This is consistent with previous years' response rates and demonstrates strong engagement between World Physiotherapy and its member organisations. The census date was 30 June 2022.
- Some data in this report has been collated from other sources available to World Physiotherapy.
- If you have any questions or concerns, or want to make changes to your country's data, please contact [membershipcensus@world.physio](mailto:membershipcensus@world.physio).