



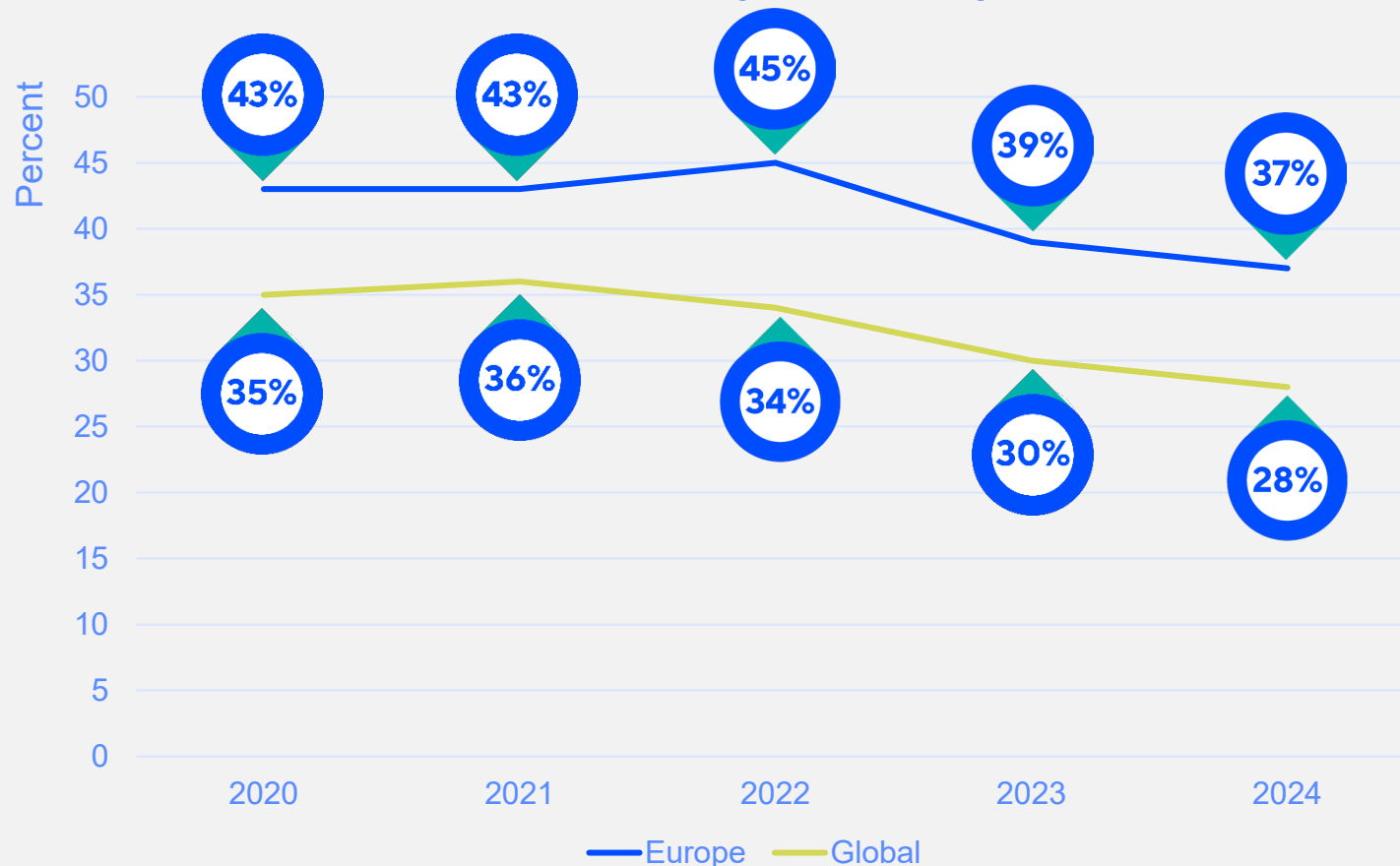
**World  
Physiotherapy**  
Europe region

**2024**

**ANNUAL  
MEMBERSHIP  
CENSUS**

# MEMBERSHIP AND PHYSIOTHERAPY WORKFORCE IN EUROPE

Percentage of physiotherapists who are members of a World Physiotherapy member organisation in the Europe region compared with total physiotherapy workforce



Since 2020, the percentage of physiotherapists who are members of a World Physiotherapy member organisation in the Europe region compared with the total workforce has decreased by

6%

This decrease is because the total number of physiotherapists in the region has increased at a faster rate than those represented by World Physiotherapy member organisations.

# MEMBERSHIP AND PHYSIOTHERAPY WORKFORCE IN EUROPE



64%

of AMC respondents in the Europe region increased their **membership** in 2024

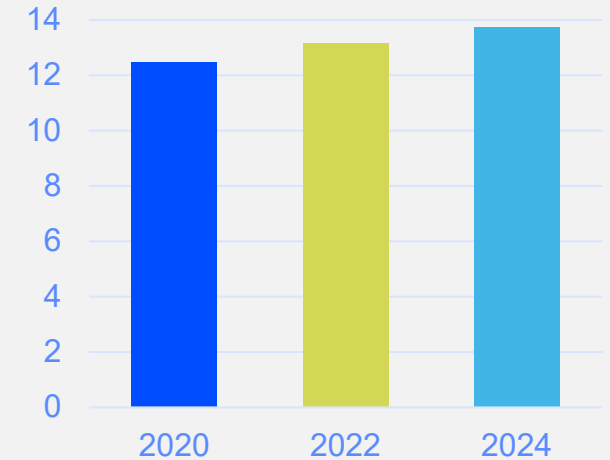


37%

of **physiotherapists** in the Europe region are **members** of their member organisation



## PHYSIOTHERAPISTS PER 10,000 POPULATION IN THE REGION

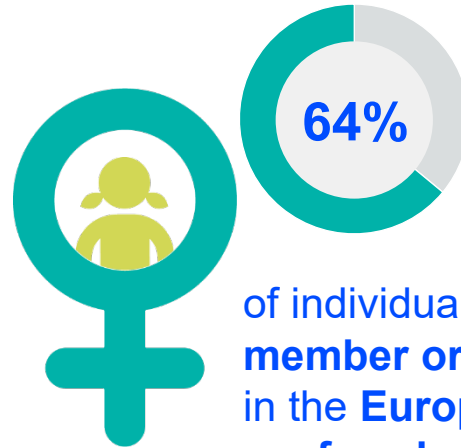
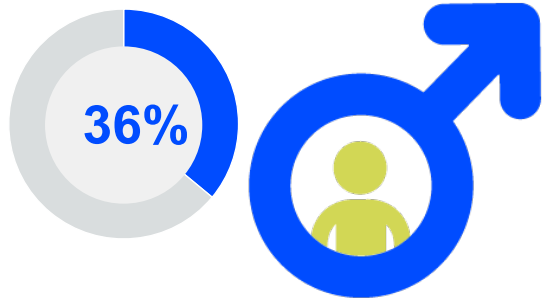


13.74

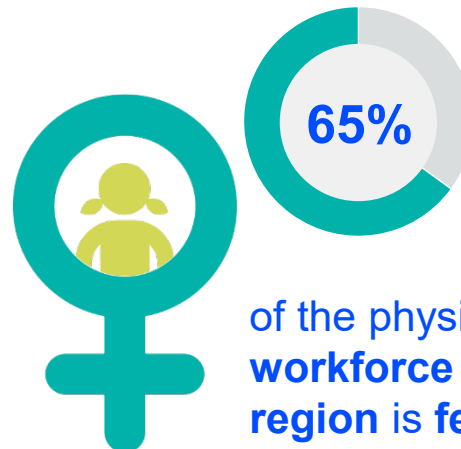
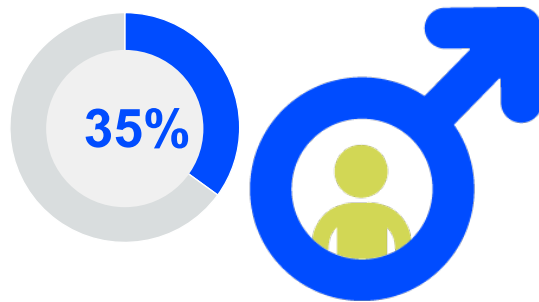
is the average number of **practising physiotherapists** per 10,000 population in the **Europe region** in 2024.

This is the **highest ratio** across all five regions.

# GENDER AND LEADERSHIP IN EUROPE



of individual members in **member organisations** in the **Europe region** are **female**



of the physiotherapy **workforce** in the **Europe region** is **female**

## BOARD MEMBERS



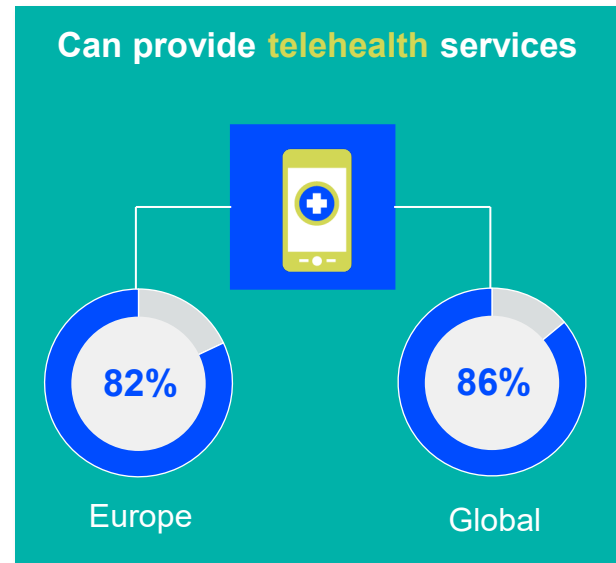
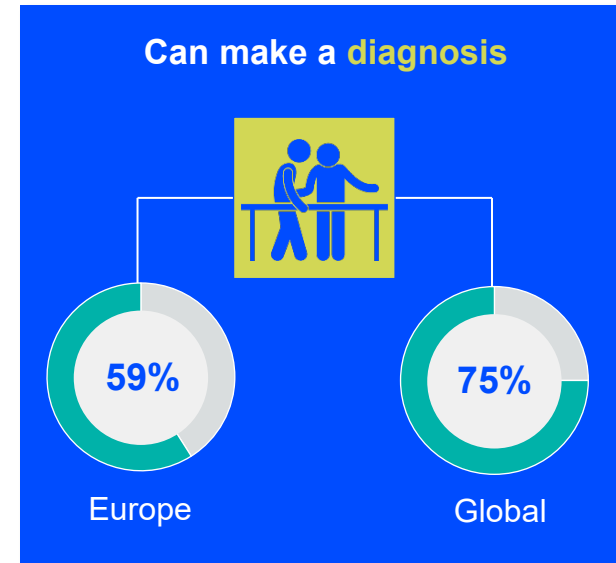
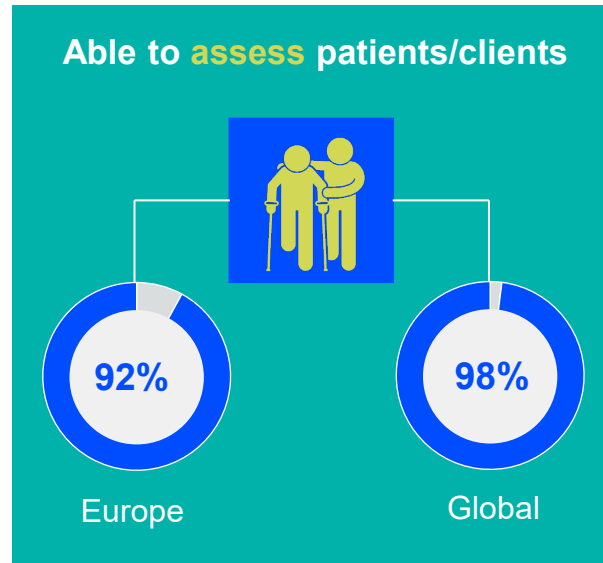
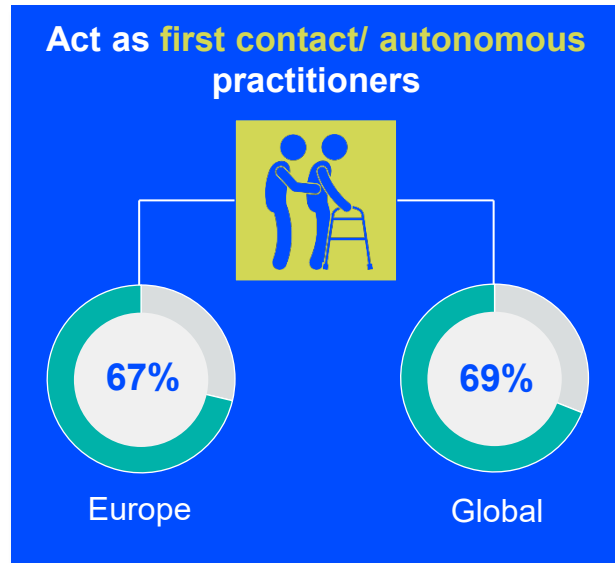
**59%** of member organisations' **board members** in the region are **female**



**55%** of the 42 member organisations in the region have **female presidents**

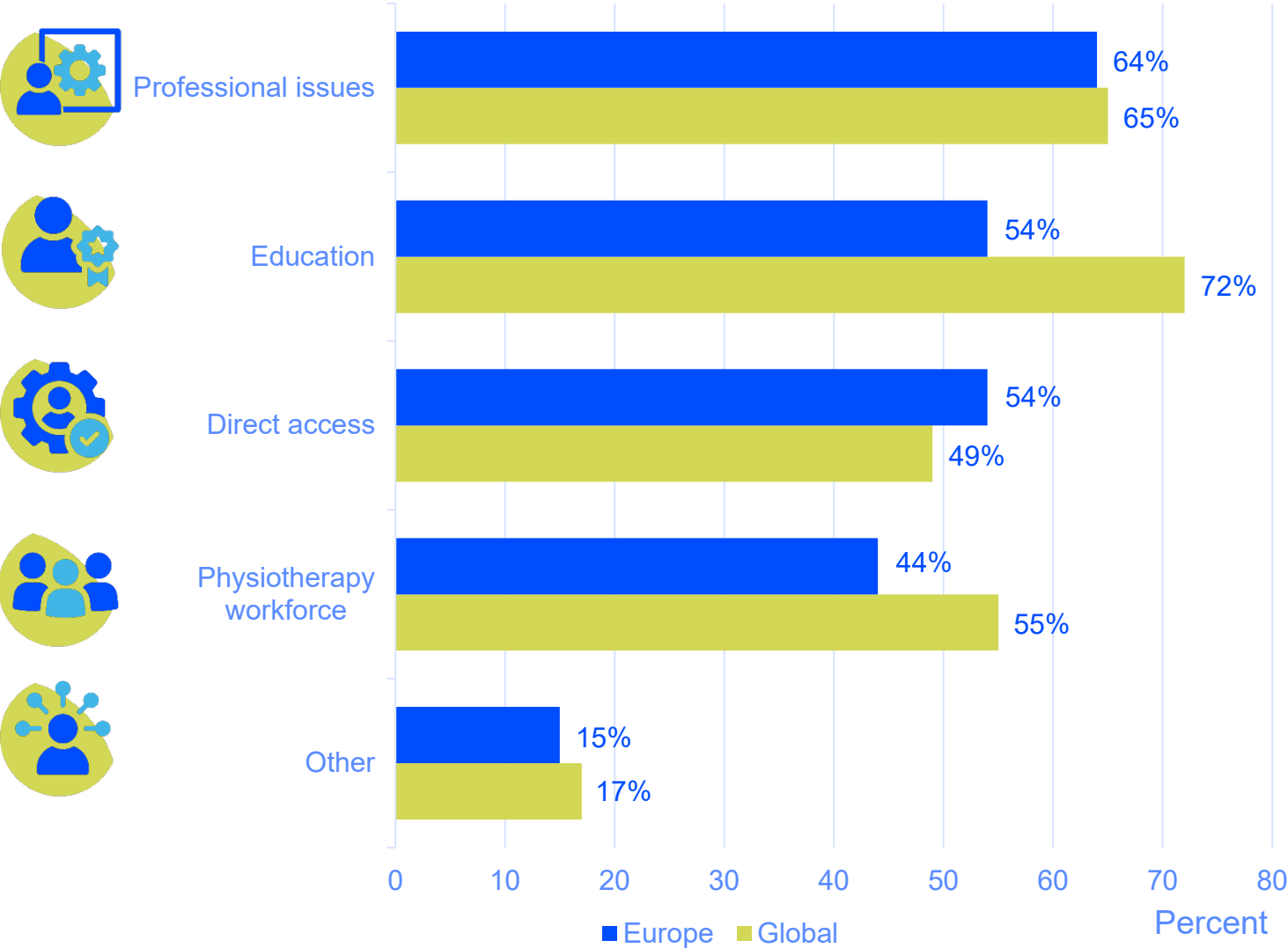
Of the 39 AMC respondents in the region, **46% reported a similar percentage of female board members** to the percentage of female physiotherapists in the workforce in their country/territory

# PERMITTED PRACTICE IN EUROPE



# ADVOCACY PRIORITIES IN EUROPE

Advocacy priorities\* for the Europe region compared with global priorities



64%

of member organisations  
in the Europe region  
stated that **professional  
issues** was an  
advocacy priority in  
2024



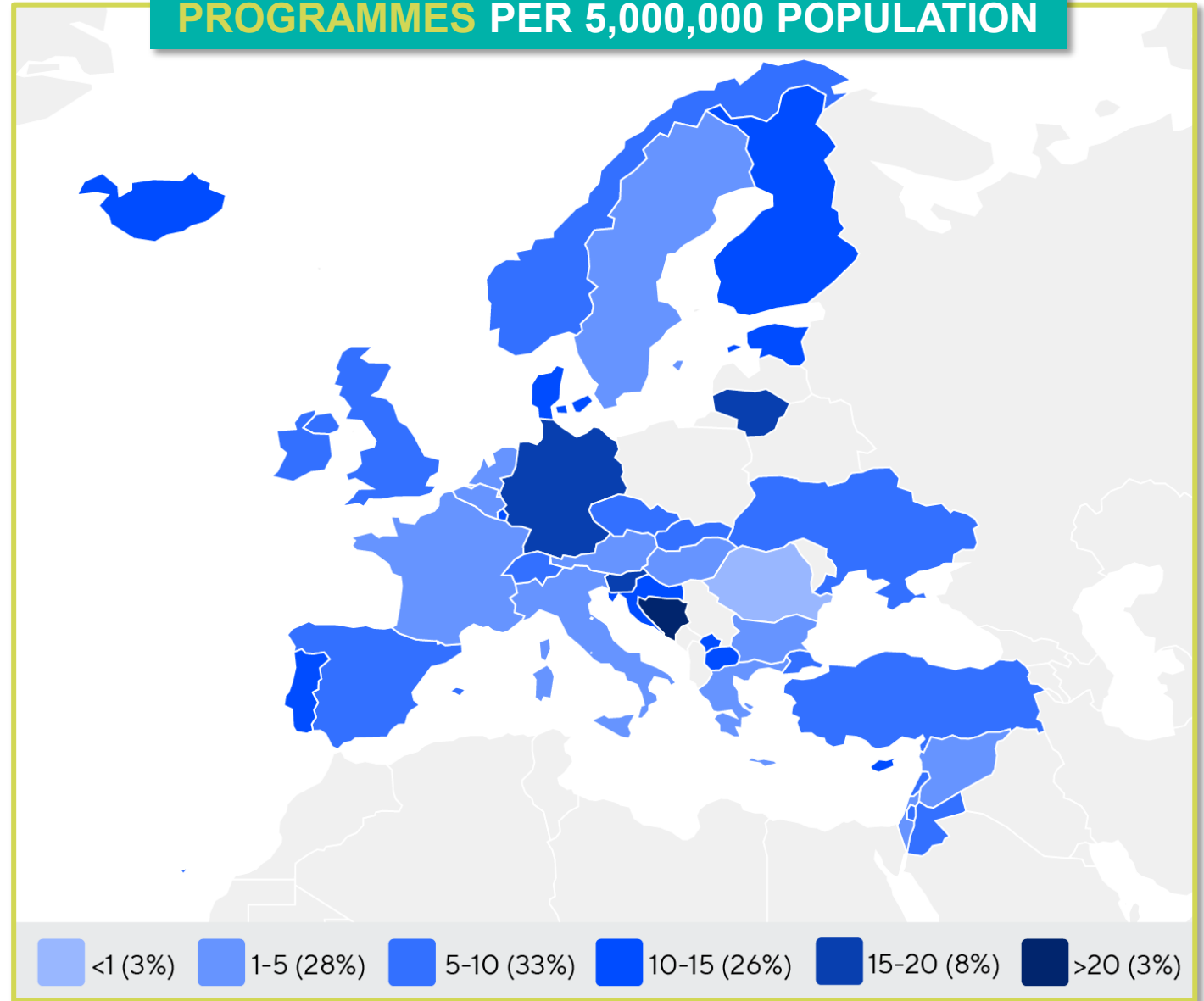
\* Member organisations were able to select more than one advocacy priority

# ENTRY LEVEL EDUCATION PROGRAMMES IN EUROPE

## NUMBER OF ENTRY LEVEL EDUCATION PROGRAMMES PER 5,000,000 POPULATION

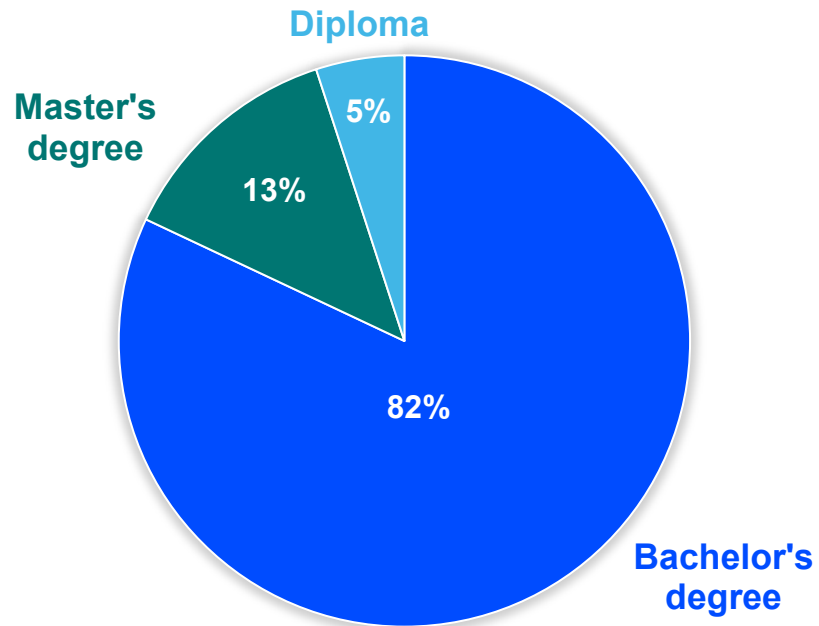
7.46

is the **average** number of entry level education programmes per 5 million population in the **Europe region** in 2024

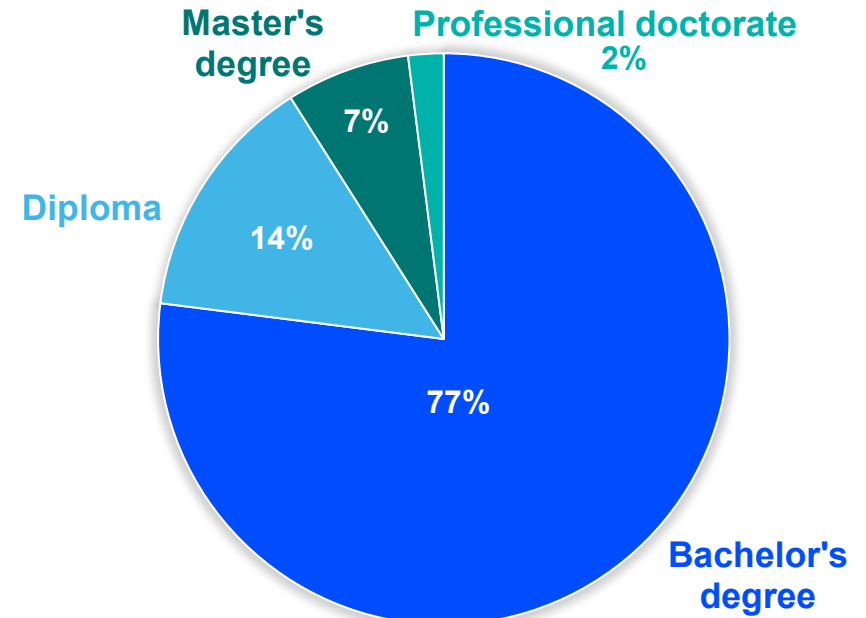


# MINIMUM QUALIFICATIONS REQUIRED TO PRACTICE IN EUROPE

## MINIMUM QUALIFICATIONS REQUIRED TO PRACTICE IN EUROPE



## MINIMUM QUALIFICATIONS REQUIRED TO PRACTICE GLOBALLY



### Bachelor's degree

is the minimum qualification most commonly required to practice in countries/territories in the Europe region



## MOST FREQUENTLY REPORTED LIMITATIONS TO DIRECT ACCESS IN EUROPE



**49%** Setting (eg outpatient, private practice, school setting, prevention and wellness, etc)



**15%** Population/health condition (eg musculoskeletal, non-complex, etc)



**10%** Time (eg medical referral required if treatment is needed beyond 30 or 60 days)



**12%** Training (eg certification, academic training, or CPD to demonstrate skill necessary to treat patients without referral from a medical doctor)

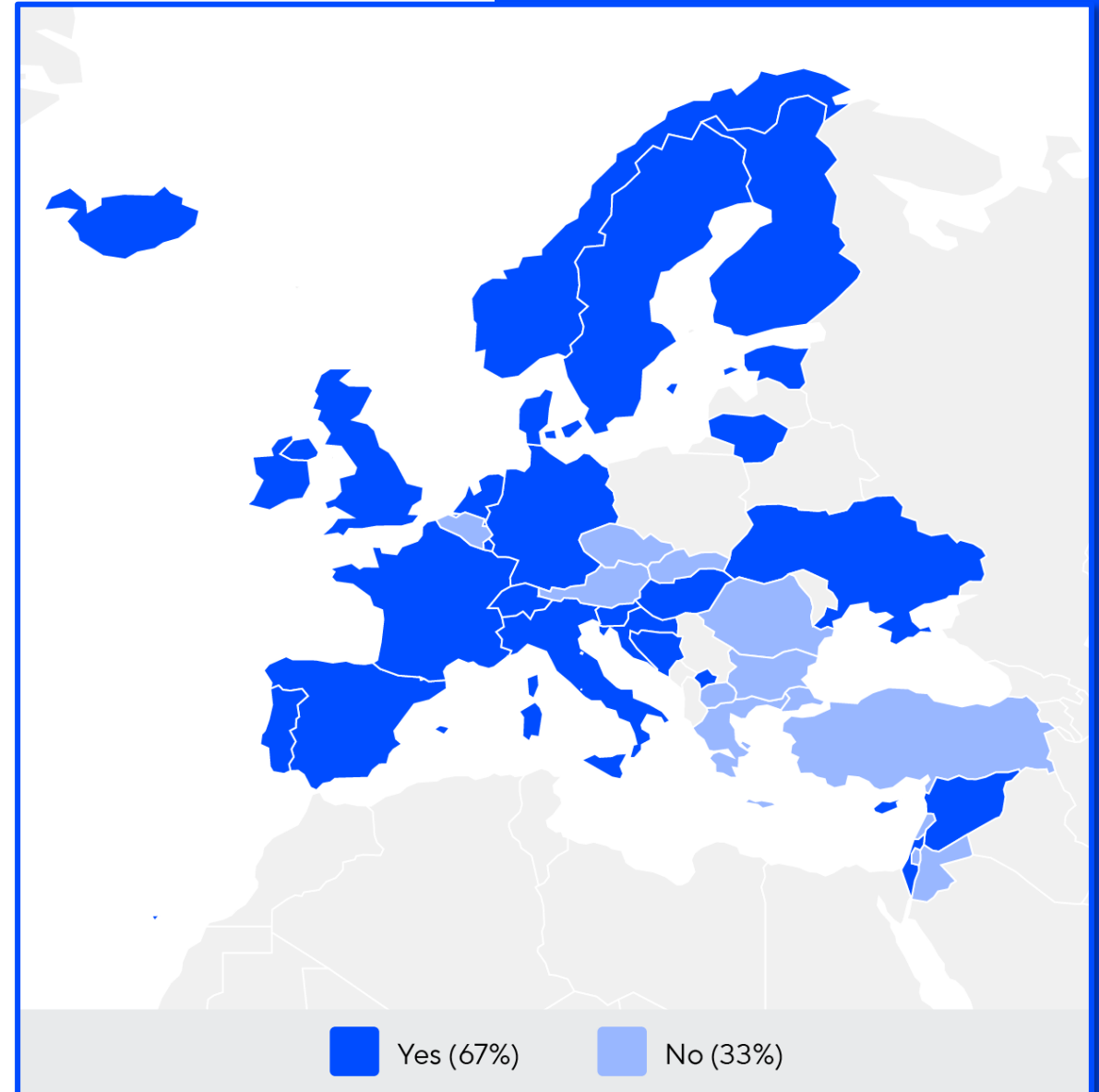


**29%** Payment (eg certain payers will not pay for services delivered via direct access)



**41%** Other

## DIRECT ACCESS IN EUROPE



# CASE STUDY SLOVENIA: LEADERSHIP PROGRAMME IMPACT

World Physiotherapy launched a leadership programme in 2021 for leaders of the physiotherapy profession. In 2023, the president of Strokovno združenje fizioterapevtov Slovenije/Slovenian Association of Physiotherapists took part in the programme and used the experience to shape and implement a governance restructure to reduce its executive committee from 26 to nine people.

The restructure was initiated by the association's general meeting, which authorised the executive committee to oversee the changes in accordance with World Physiotherapy's recommendations.

Key steps in the restructure included:

- general meeting approval
- drafting proposals between the statutory commission and an external legal advisor
- discussions and refinements through multiple regular and extraordinary executive committee meetings. Feedback from members was incorporated to ensure the final proposal met the needs of all stakeholders.
- on 18 December 2024, the executive committee unanimously approved the final restructure plan.
- statutory amendments were prepared for submission to the general meeting, scheduled for February 2025
- submission to authorities, once approved by the general meeting for official validation.

The restructure represents a milestone for Strokovno združenje fizioterapevtov Slovenije/Slovenian Association of Physiotherapists, ensuring a more inclusive, effective, and contemporary governance structure that aligns with the needs of their membership and the physiotherapy profession in Slovenia.



# ENGAGEMENT IN EUROPE

## Europe region respondents

Austria	Lebanon
Belgium	Liechtenstein
Bosnia and Herzegovina	Lithuania
Bulgaria	Luxembourg
Croatia	Malta
Cyprus	Netherlands
Czech Republic	Norway
Denmark	Palestine
Estonia	Portugal
Finland	Romania
France	Slovakia
Germany	Slovenia
Greece	Spain
Hungary	Sweden
Iceland	Switzerland
Ireland	Syria
Israel	Turkey
Italy	Ukraine
Jordan	United Kingdom
Kosovo	

# 93%

of member organisations (39 out of 42) in the Europe region submitted data for the annual membership census in 2024

## DISCLAIMER

- The data in this report is based on responses to the annual membership census (AMC) sent to World Physiotherapy's member organisations.
- The AMC was sent to 125 member organisations, of which 120 responded, representing a 96% response rate. This is consistent with previous years' response rates and demonstrates strong engagement between World Physiotherapy and its member organisations. The census date was 30 June 2024.
- Some data in this report has been collated from other sources available to World Physiotherapy.
- If you have any questions or concerns, or want to make changes to the data for your country/territory, please contact [membershipcensus@world.physio](mailto:membershipcensus@world.physio).